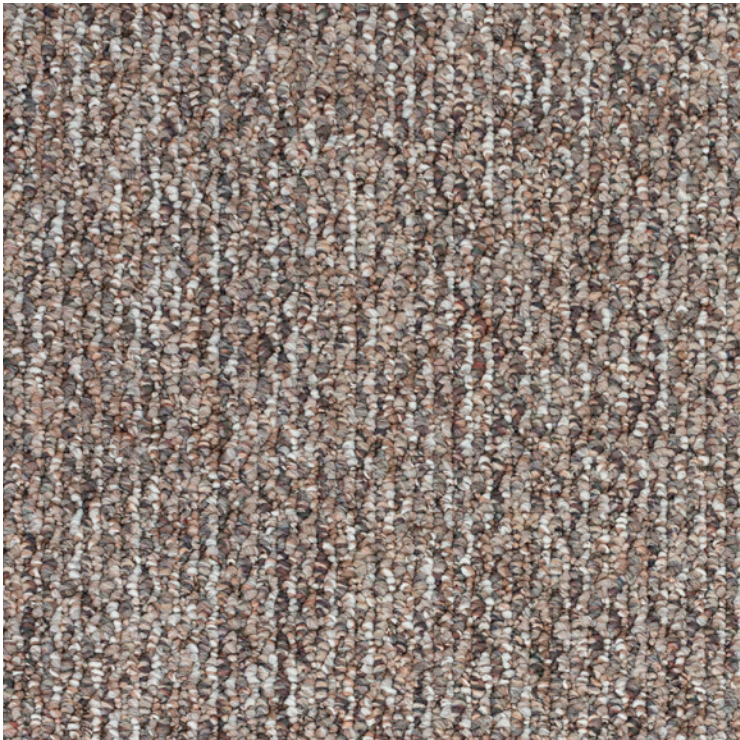


STARLIGHT II S252



This is our flagship berber-look carpet, styled in a classic textural loop construction. Each color is designed with combinations of tonal or cross-color yarns to look smart in any style of décor. Available in 9 timeless colorations.

PRODUCT SPECIFICATIONS*

STYLE TYPE:	SCROLL LOOP BERBER
FIBER:	100% BCF SD-XTRA [®] POLYPROPYLENE
GAUGE:	3/16
WIDTH:	12 FT. & 15 FT.
TUFTED YARN WEIGHT:	20.5 OZ. PER SQUARE YARD
PILE HEIGHT:	21/64" (HIGH) 9/64" (LOW)
DYEING PROCESS:	SOLUTION DYED
PRIMARY BACKING:	WOVEN POLYPROPYLENE
SECONDARY BACKING:	ACTIONBAC
PATTERN REPEAT (W x L):	3/4" W X 1" L
FLAMMABILITY:	PASSES PILL TEST (CPSC FF1-70, ASTM D-2859)

*All specifications are approximate and are subject to normal manufacturing tolerances not to exceed industry standards.

SPECIAL FEATURES

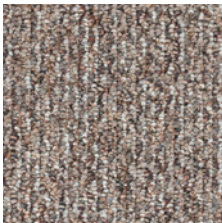
- SD-XTRA[®] POLYPROPYLENE - SOLUTION DYED FIBER FOR SUPERIOR FADE RESISTANCE AND INHERENT STAIN RESISTANCE
- ECO FRIENDLY — VIRTUALLY WATERLESS MANUFACTURING PROCESS
- CARPET AND RUG INSTITUTE GREEN LABEL PLUS INDOOR AIR QUALITY CERTIFIED
- PERMANENT STATIC CONTROL

WARRANTIES

- 10 YEAR LIMITED WEAR
- 10 YEAR LIMITED STAIN



5208 Earthenware



5209 Bravado



5213 Timberlake



5224 Landscape



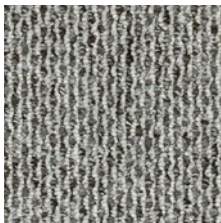
5231 Stellar



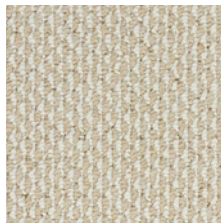
5232 Urban Mix



5233 Marble



5234 Eclipse



5235 Day Glow